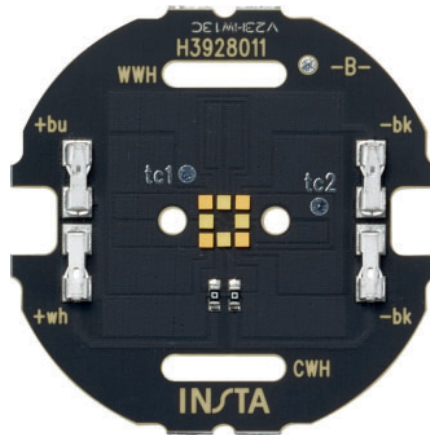


50933051

## LED circuit board round warmdim



The Plug & Light LED circuit board round warmdim is designed to be integrated into your luminaire housing. The luminaire is already included, allowing you to focus on the design of the housing and the appearance.

The circuit board is optimally matched to our Plug & Light PUKs and thus rounds off the offer for you as a partner.

### Product features

- › Installation in positive-locking luminaire bodies
- › Can only be used in combination with a Plug & Light PUK



## Technical details

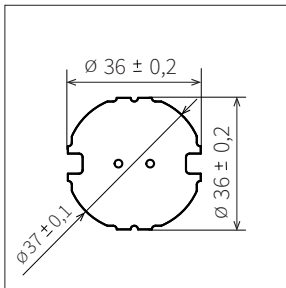


Fig. 2: Front view  
[All dimensions in mm]

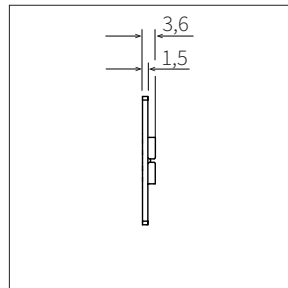


Fig. 3: Side view

## Technical data

Power consumption	max. 6.2 W
Current consumption	max. 500 mA *
Number of LEDs	8
Number of channels	2
Colour temperature	3100 – 6200 K
Light colour	warm white – daylight white
Luminous flux	530 lm
Luminous efficiency	86 lm/W
Beam angle	153°
Colour rendition RA	89 - 92
Efficiency class	G (classification according to directive 2019/2015/EU)
Dimmable / controllable	Yes
Dimming range	1 - 100 %
Lifespan (L80B10)	75,000 h (@ 55 °C at the tc point)
Temperature at the tc point	max. 97 °C
Circuit board material	Alucore (IMS)
Connection mode on secondary side	Single wire, solid: 0.5 mm <sup>2</sup> (AWG21) Flexible, tinned ends: max. ø 0.8 mm / 0.25 mm <sup>2</sup> (AWG24) Stripping length 5.5 +/- 0.5 mm
Risk category according to DIN IEC TR 62778 - 2014 - 03	2
Photometric code	830 / 339 - 862 / 339
Dimensions	See Fig. 2 and Fig. 3

\* At maximum current consumption, the circuit board must be sufficiently cooled!