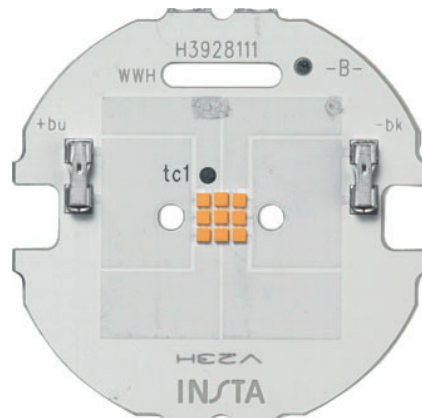


50933050

LED circuit board round monochrome

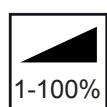


The Plug & Light LED circuit board round monochrome is designed to be integrated into your luminaire housing. The luminaire is already included, allowing you to focus on the design of the housing and the appearance.

The circuit board is optimally matched to our Plug & Light PUKs and thus rounds off the offer for you as a partner.

Product features

- › Installation in positive-locking luminaire bodies
- › Can only be used in combination with a Plug & Light PUK



Technical details

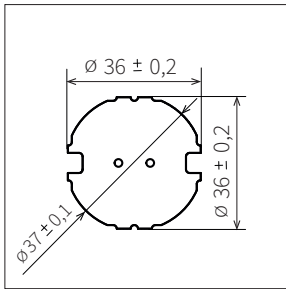


Fig. 2: Front view
[All dimensions in mm]

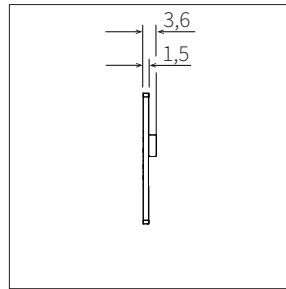


Fig. 3: Side view

Technical data

Power consumption	max. 8.1 W
Current consumption	max. 900 mA *
Number of LEDs	9
Number of channels	1
Colour temperature	2700 K
Light colour	warm white
Luminous flux	840 lm
Luminous efficiency	104 lm/W
Beam angle	139°
Colour rendition RA	84
Efficiency class	F (classification according to directive 2019/2015/EU)
Dimmable / controllable	Yes
Dimming range	1 - 100 %
Lifespan (L80B10)	75,000 h (@ 55 °C at the tc point)
Temperature at the tc point	max. 95 °C
Circuit board material	Alucore (IMS)
Connection mode on secondary side	Single wire, solid: 0.5 mm ² (AWG21) Flexible, tinned ends: max. ø 0.8 mm / 0.25 mm ² (AWG24) Stripping length 5.5 +/- 0.5 mm
Risk category according to DIN IEC TR 62778 - 2014 - 03	1
Photometric code	827 / 339
Dimensions	See Fig. 2 and Fig. 3

* At maximum current consumption, the circuit board must be sufficiently cooled!